

GENERAL DESCRIPTION

List: RH06-4F-1-May 2016

- ✓ 4/2- way directional control valves with mechanical operation
- ✓ Reliability and long life
- ✓ Mounting surface CETOP3 (NG6)

RH06...4F...



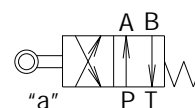
These RH06...4F... valves consist of a spool, housing, springs and mechanical control unit. They are used to control the start, stop and direction of flow.

The valves are used for hydraulic power control. This model is designed with two-spring centered spool.

The housing has 5-chambers and vertical "T" duct.

The valve location during assembly is of minor importance, but the horizontal position is generally recommended.

Symbol



ORDERING CODE

RH 06 ... 4 F

Directional control valve

Nominal size

Functional symbol

see page 2/3

Type of control

- mechanical

Modification

Omit-Without spacers
S -with spacers

Spacers

see page 2/3

Backing of the housing

N - normal
T - tropical

TECHNICAL DATA

DATA	UNIT	VALUE/RANGE
Weight	kg	1,420
Max. Pressure	port P, A & B port T	32 16
Rated flow	(at $D_p=0,1\text{MPa.}$)	l/min
Actuating force	$-F_{\min}$ $-F_{\max}$	N
		30 130

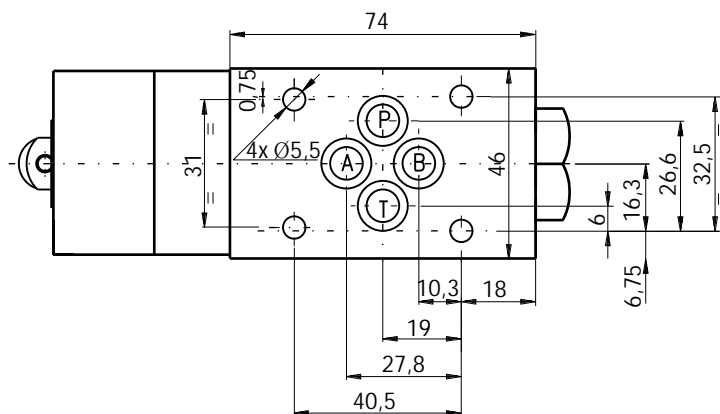
FUNCTIONAL SYMBOLS

DESIG-NATION	SYMBOL	INTERMEDIATE	DESIG-NATION	SYMBOL	INTERMEDIATE
10			34		
12			36		
13			39		
14			45		
16			64		
17			68		
24			70		
27			78		
28			83		
32					

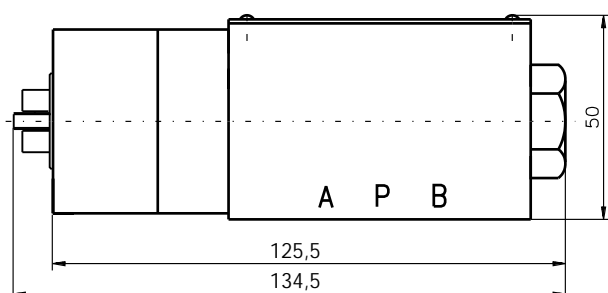
Other symbols on request.

DIMENSIONS

All dimensions are shown in mm.

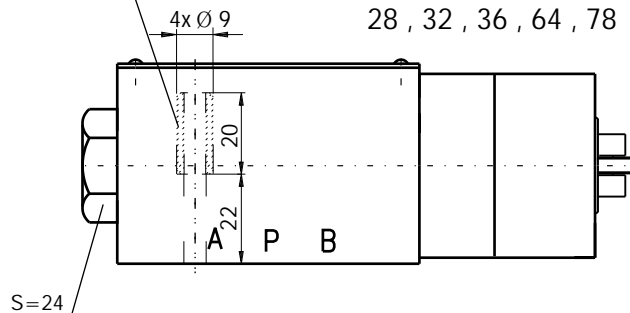


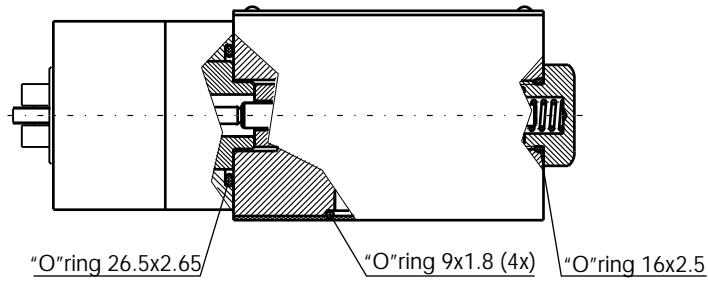
Symbols 12 , 17 , 24 , 27 , 34 , 39 , 45 , 68 , 70 , 83



Standard fixing bolts M5x30 (10,9 class recommended). Torque-6...8 Nm. In case of modular mounting spacers are available upon order - see "ORDERING CODE" - code S.

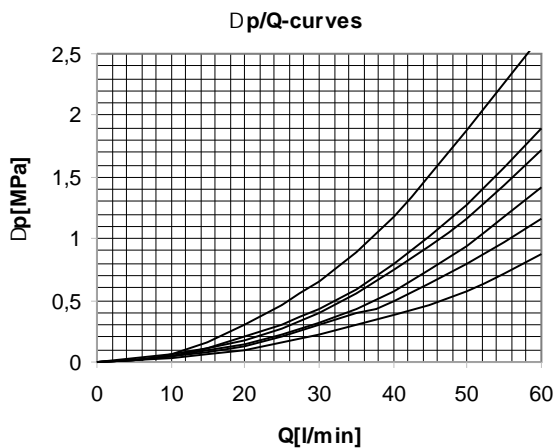
Symbols 10 , 13 , 16 , 28 , 32 , 36 , 64 , 78





CHARACTERISTICS

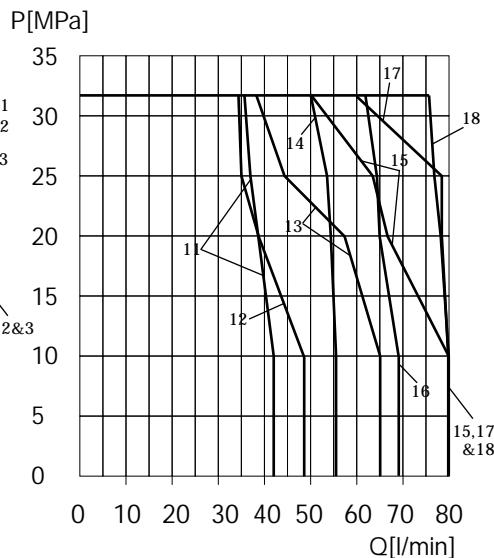
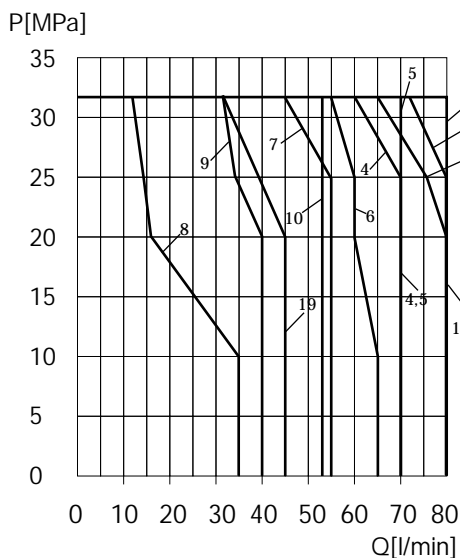
Dp/Q



SYMBOL	CURVE					SYMBOL	CURVE				
	P>A	P>B	A>T	B>T	P>T		P>A	P>B	A>T	B>T	P>T
00	2	2	1	1	3	28	3				
01	2	2	1	1		32	3	3			
02	5	5	5	5	4	33		2	1		3
04	3	3	1	1		34	1				
05	2	2	2	2		36	1	1	2	3	
06	3	3	3	3	4	39	1	1	3	2	
08	2	2	1	1		40		4	6		
10	3	4	3	2		41		4	1		
11	2	2	1	1		42	3	2	1	2	
12	4	3	2	3		45		2	1		
13	2	2				52	1	1			
14	5			5	4	61	4			1	
16	2			1		62	4			6	
17		2	2			64	2			1	
18	2	2	1	1		68	3	3			
19	2	2	2	2		70	3	2	1	2	
20	3	3	2	2		78	1			2	4
21(mid./end)	2/1	3	3	3		83		2	1		
24		3	1			99	2			2	4
26	3	2	1	2							
27	2			1							

p/Q

The operating limit of hydraulic power shown here is for applications with two directions of flow (e.g. from P to B and simultaneously from A to T). If the valve is with one direction passage only (e.g. from P to B and with blocked port A), the operating limit may considerably be reduced. The performance limits are measured with hydraulic oil 35±5 cSt, temperature 50 °C.



SYMBOL	CURVE	SYMBOL	CURVE
00	1	28	3
01	1	32	8
02	19	33	1
04	3	34	1
05	4	36	9
06	7	39	9
08	5	40	18
10	5	41	17
11	14	42	15
12	5	45	1
13	6	52	12
14	19	61	17
16	1	62	18
17	4	64	1
18	1	68	8
19	16	70	15
20	2	78	11
21	10	82	
24	3	83	1
26	15	98	
27	1	99	13