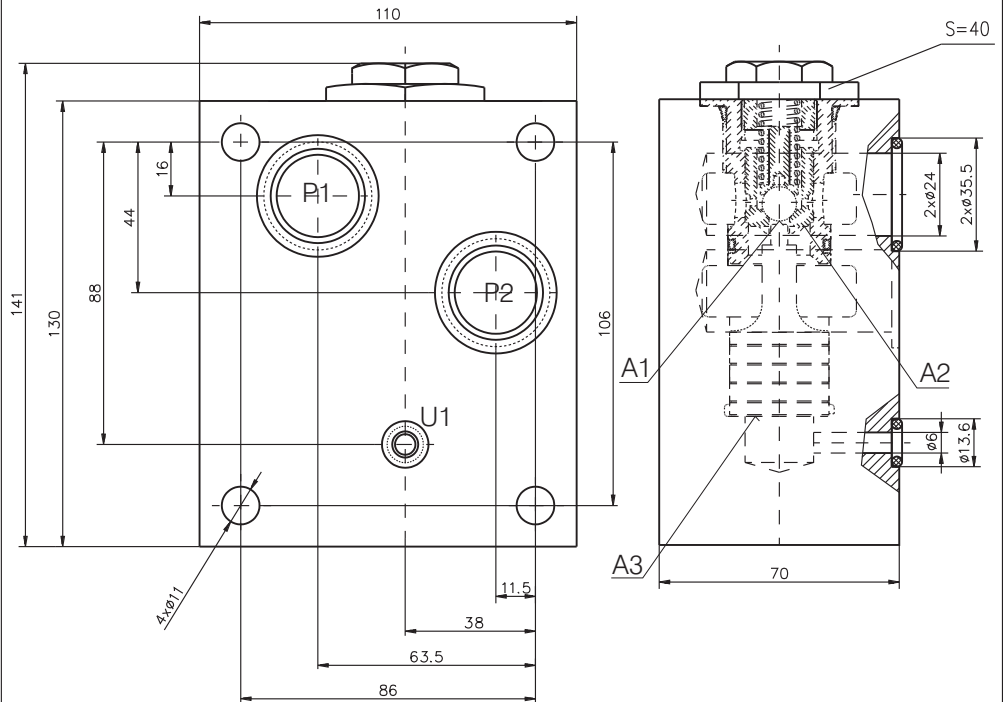
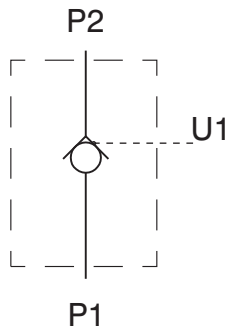


DESCRIPTION

✓ Check valves with hydraulic operation for plate mounting-KOHU16P
 ✓ Hydraulically operated check valve is designed to allow working liquid passing in one direction freely (P_2 to P_1), and at availability of control signal in the opposite direction (P_1 to P_2). The valve ensures hydraulic "locking" of the hydraulic cylinders, i.e. providing their stability under load at neutral position of the directional control valve.

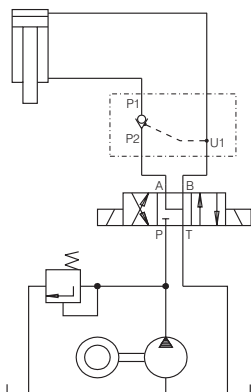
DIMENSIONS

SYMBOL

ORDERING CODE

KOHU	16	P
------	----	---

Check valve with hydraulic operation

Nominal bore-16 mm

Plate mounting

APPLICATIONS

TECHNICAL DATA

Max. Pressure	320 bar
Rated flow	160 l/min
Cracking pressure (for check valve)	0,8 bar
Area ratio - (check valve seat/pilot piston)	A2/A3
- (check valve ball/pilot piston)	A1/A3
Working liquid-hydraulic oils with characteristics:	
-viscosity	10...400 cSt
-degree of filtration	0,025 mm
-temperature	-20...+80°C