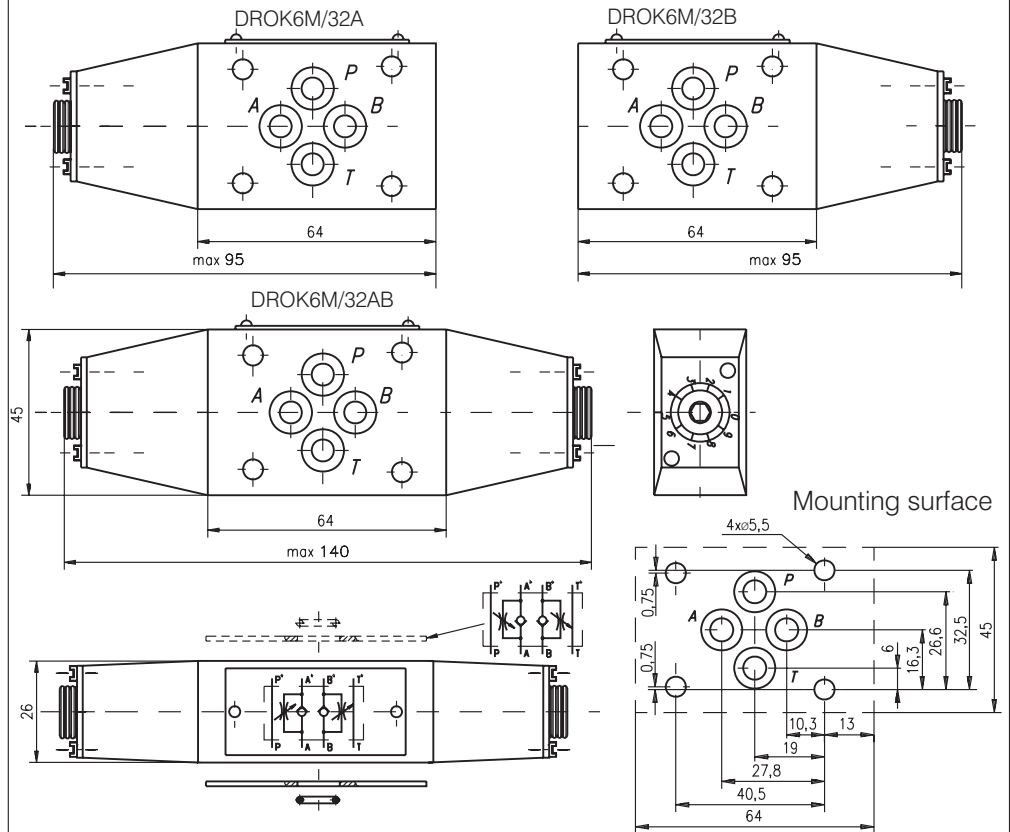
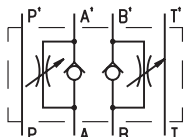
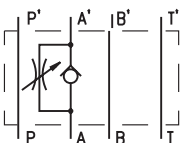


DESCRIPTION

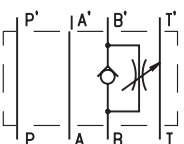
- ✓ Adjustable throttles with check valves for modular mounting-DROK6M/32-...
- ✓ The throttle check valves limit the flow by adjustable throttling spool at one direction, and allow free return passing through the other.
- ✓ Mounting surface CETOP3 (NG6)

DIMENSIONS

SYMBOL


DROK6M/32AB



DROK6M/32A



DROK6M/32B

ORDERING CODE

DROK	6	M	/	32	***
------	---	---	---	----	-----

Adjustable throttle with check valve

Nominal bore 6mm.

Modular mounting

Rated pressure: up to 320 bar.-32

 Valve location:

- at line A - A
- at line B - B
- at line A and B - AB

TECHNICAL DATA

Weight	DROK6M/32A and DROK6M/32A	0,650 kg
	DROK6M32/AB	0,810 kg
Max. Pressure		320 bar
Rated flow ($\Delta p=3,5$ bar.)		20 l/min
Cracking pressure (for check valve)		0,2 bar
Working liquid-hydraulic oils with characteristics:		
-viscosity		10...400 cSt
-degree of filtration		0,025 mm
-temperature		-20...+80°C